



Splash Smart Panel



Splash Smart Panel Model number: 31ANN16763SH19

3 beds • 2 baths • 1216 sq.ft. • 16' width • 76' depth

Our home building facilities invest in continuous product and process improvements. Plans, dimensions, features, materials, specifications and availability are subject to change without notice or obligation. Renderings and floor plans are representative likenesses of our homes and may differ from the actual homes. We invite you to tour a Home Center near you and inspect the highest value in quality housing available or call (281) 342-0552 to speak with a Home Consultant. Copyright 2017, CMH. All rights reserved.

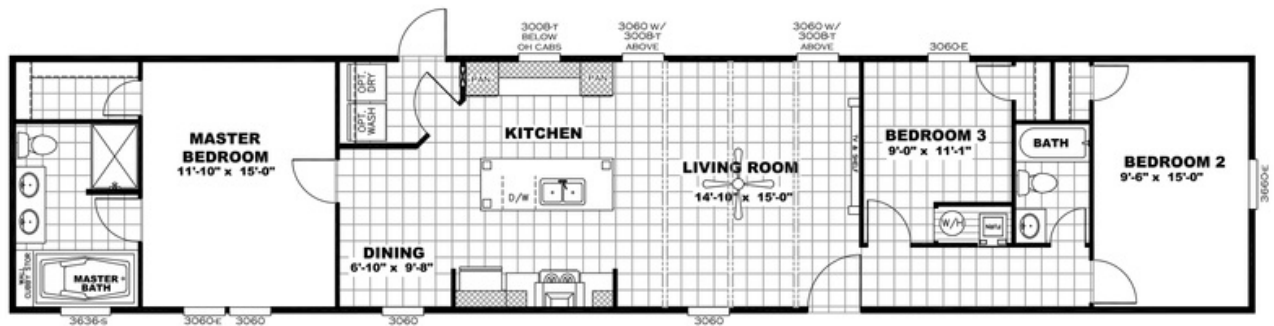
<https://www.claytonrosenberg.com>

CLAYTON HOMES-ROSENBERG

2919 FIRST ST., HWY 36
ROSENBERG, TX 77471

Monday - Thursday: 9am - 7pm
Friday: 9am - 6pm
Saturday: 9am - 5pm
Sunday: Closed

(281) 342-0552



MODEL# ANN16763SH

DRAWING # 31-76S-TXANN

ALL WINDOWS ARE THERMAL PANE

Splash Smart Panel Model number: 31ANN16763SH19

3 beds • 2 baths • 1216 sq.ft. • 16' width • 76' depth

Our home building facilities invest in continuous product and process improvements. Plans, dimensions, features, materials, specifications and availability are subject to change without notice or obligation. Renderings and floor plans are representative likenesses of our homes and may differ from the actual homes. We invite you to tour a Home Center near you and inspect the highest value in quality housing available or call (281) 342-0552 to speak with a Home Consultant. Copyright 2017, CMH. All rights reserved.

<https://www.claytonrosenberg.com>

CLAYTON HOMES-ROSENBERG

2919 FIRST ST., HWY 36
ROSENBERG, TX 77471

Monday - Thursday: 9am - 7pm
Friday: 9am - 6pm
Saturday: 9am - 5pm
Sunday: Closed

(281) 342-0552